

SMR
إس إم آر

BIRRUS



ULTRAMAT

First Impressions Count

The ultimate design choice for your building entrance

Your entranceway creates the first impression of your building. Matting systems often let down quality building design by sacrificing visual appeal with low quality matting. However, ULTRAMAT from Birrus can offer you the look you want without the need to compromise on performance or durability.

BIRRUS ULTRAMAT STYLE

ULTRAMAT offers a quality finish for your building entrance which will complement the visual impact that your design creates. With a range of different carpet options, we can offer unrivalled design flexibility to complement your chosen colour scheme.

BIRRUS ULTRAMAT PERFORMANCE

Your matting system is also there to do a job. ULTRAMAT offers exemplary dirt and moisture retention, even in buildings with high foot-traffic. This not only keeps your entranceway flooring clean and dry, it also contributes to its longevity by reducing wear and tear.

BIRRUS ULTRAMAT QUALITY

This quality system is for buildings that need to create the right first impression. Retail and commercial buildings that need to express professionalism with an accent of luxury.

The look that you want to create must be backed by a matting system that offers high performance and the durability to stand the test of time.

ANODISED RANGE NOW AVAILABLE

Our anodised range offers further options, delivering a durable coating on the aluminium in Clear, Precious Gold, Midnight Black, or Antique Bronze.



All Birrus Matting is proudly manufactured in Australia using high quality materials and modern manufacturing processes.



BIRRUS ULTRAMAT SYSTEMS

BIRRUS ULTRAMAT

Birrus ULTRAMAT is our flagship product and is constructed from alternate treads of aluminium and carpet running across the doorway. It is ideal for interior or exterior applications with the appropriate type of textured insert selected by you.

The carpet treads are securely held within extruded aluminium retaining sections which are lightly furrowed on the exposed side to produce a non-skid surface.

ULTRAMAT is available in open and closed construction formats. The Open Slimline construction has a 10mm depth and features a perforated joining strip between the carpet strips to allow for drainage. The Closed construction is available in both 10mm and 16mm depths. As with all Birrus matting systems, ULTRAMAT can be individually tailored to meet the length and width required for your design.

BIRRUS ULTRAMAT TECHNICAL SPECIFICATION

CONSTRUCTION

- High quality aluminium construction
 - » 6000 series alloy for a high-quality and corrosion resistant finish
- Furrowed aluminium treads for a non-slip surface
- Closed or open slimline construction options
 - » Closed construction available in 10mm and 16mm depth
 - » Open construction available in 10mm depth

DESIGN

- Optional 15 micron anodised coating available in Precious Gold, Antique Bronze, Midnight Black or Clear
- A range of different carpet colour options
- Carpet ranges include premium loop and cut pile options
- Matting length and width can be constructed to your specification

ACCREDITATION

- Our Cut Pile and Loop Pile options are both slip tested and fire tested to Australian Standards

LOOP PILE SPECIFICATIONS

Technical Specification

- Construction:** Tufted textured tip sheered loop
- Yarn:** Type 6 Nylon
- Pile Weight:** 814 g/m²
- Colour System:** 100% Solution dyed nylon
- Machine Gauge:** 1/12th Gauge
- Pile Height:** 4.0mm (+/- 0.5mm)
- Total Thickness:** 7.5mm (+/- 0.5mm)
- Backing Structure:** GlasBac[®], GlasBac[®]RE

Performance Specification

- Area of Use:** Commercial extra heavy duty
- Dimensional Stability:** Less than 0.2% variation
- Anti-static:** AATCC134 < 3000 Volts
- Fire Testing Certification:** available on request
- Slip Testing Certification:** available on request
- Greenhouse Gas Emissions (GHG):**
 - Qualifies for the accredited Cool Carpet™ program option with zero net GHG emissions associated with the life cycle of the product.
 - Less Waste:** Modular carpet creates about 85% less installation waste than broadloom.

BIRRUS ULTRAMAT PROFILES



Closed Construction 10mm & 16mm



Open Construction Slimline 10mm

CUT PILE SPECIFICATIONS

Technical Specification

- Construction:** Cut Pile
- Yarn:** Yarn dyed nylon
- Yarn Weight:** 1000 g/m²
- Machine Gauge:** 1/10th Gauge
- Total Thickness:** 9.0mm
- Backing Structure:** Reinforced PVC backing

Performance Specification

- Commercial Rating:** Extra heavy duty
- Anti-static:** <1000v
- Fire Testing Certification:** available on request
- Slip Testing Certification:** available on request

REQUEST A SAMPLE

To request a free sample of ULTRAMAT for consideration on your next project, call 1300 369 858 or visit www.birrusmatting.com.au



BIRRUS ULTRAMAT ANODISED COLOURS



ABOUT BIRRUS

For over 60 years, Birrus has been trusted by architects and builders in Australia for products that are both beautiful and durable. We have maintained our market leadership by moving with the times, using the latest materials and design innovations to remain your first choice for matting systems. All of our matting systems are manufactured in Australia using high-grade materials and are backed by a 10 year warranty. As a company, Birrus has also implemented a number of measures to minimise our carbon footprint, initiated recycling procedures and gained environmental accreditation.



DURAMAT

Reliable Resilience

Our most durable matting system for high-traffic entranceways

In areas exposed to heavy traffic, matting systems need to stand up to high levels of wear while providing a non-slip surface. This is especially true in external areas where exposure to the elements could increase wear. DURAMAT is our toughest matting system designed to stand up to real punishment.

BIRRUS DURAMAT DURABILITY

DURAMAT uses ribbed heavy-duty PVC/Nitrile scraping bars to remove dirt and prevent it being carried into the building. These strips are set between extruded aluminium treads and together, they form a robust matting system which will efficiently trap dirt and grit while being durable enough for long term use in high-traffic entranceways.

BIRRUS DURAMAT DESIGN

In designing DURAMAT, we have considered your need for the right appearance. An anodised coating for the aluminium sections is available in Clear, Precious Gold, Antique Bronze or Midnight Black, to compliment your entranceway design.

We also considered the environmental aspects of manufacture and are proud to say that Birrus DURAMAT is GreenTag Certified.

BIRRUS DURAMAT SAFETY

DURAMAT provides a surface which retains dirt and grit from both foot and wheeled traffic, it is ideal for applications such as:

- Shopping Centres
- Airport Terminals
- Sporting and Community Facilities
- Educational Facilities
- Hospitals

DURAMAT is designed as a safe matting system for areas where the volume of traffic would quickly wear-out other matting.

All Birrus Matting is proudly manufactured in Australia using high quality materials and modern manufacturing processes.



BIRRUS DURAMAT SYSTEMS

BIRRUS DURAMAT

Birrus DURAMAT uses the same construction and styling as other Birrus matting systems to deliver performance with visual appeal. The use of PVC/Nitrile strips makes a more durable system that is designed to stand up to heavier wear without reducing performance in dirt and grit retention.

DURAMAT is available in open and closed construction formats. The Open Slimline construction has a 10mm depth and features a perforated joining strip between the rubber strips to allow for drainage. The Closed construction is available in both 10mm and 16mm depths. As with all Birrus matting systems, DURAMAT can be individually tailored to meet the length and width required for your design.

The material used for the rubber insert is a PVC resin that is blended with nitrile polymers to provide increased resistance to abrasion and ozone. It also has very good acoustic insulation and resistance to oil, fuel and acid.

BIRRUS DURAMAT TECHNICAL SPECIFICATION

CONSTRUCTION

- High quality aluminium construction
 - » 6000 series alloy for a high-quality and corrosion resistant finish
- Furrowed aluminium treads for a non-slip surface
- Closed or open slimline construction options
 - » Closed construction available in 10mm and 16mm depth
 - » Open construction available in 10mm depth
- Heavy-duty Welvic 5744 soft flexible vinyl/nitrile rubber inserts

DESIGN

- Optional 15 micron anodised coating available in Precious Gold, Antique Bronze, Midnight Black or Clear
- Matting length and width can be constructed to your specification

ACCREDITATION

- Australian made and GreenTag Certified to GreenRate Level C

BIRRUS DURAMAT PROFILES



Closed Construction 10mm & 16mm

REQUEST A SAMPLE

To request a free sample of DURAMAT for consideration on your next project, call 1300 369 858 or visit www.birrusmatting.com.au



BIRRUS DURAMAT ANODISED COLOURS

Precious Gold

Antique Bronze

Midnight Black

ABOUT BIRRUS

For over 60 years, Birrus has been trusted by architects and builders in Australia for products that are both beautiful and durable. We have maintained our market leadership by moving with the times, using the latest materials and design innovations to remain your first choice for matting systems. All of our matting systems are manufactured in Australia using high-grade materials and are backed by a 10 year warranty. As a company, Birrus has also implemented a number of measures to minimise our carbon footprint, initiated recycling procedures and gained environmental accreditation.





DURAGRIT Safety First

Hard-wearing matting system designed for hazardous surfaces

Providing sure footing where floors are sloped and may be slippery or wet, requires a matting system designed specifically for that environment. DURAGRIT combines hard-wearing materials to cope with heavy traffic, with the performance needed to provide grip under circumstances that would be too much for other matting systems.

BIRRUS DURAGRIT DESIGN

Designed & manufactured in Australia, DURAGRIT is for heavy-traffic areas and has a durable aluminium frame with a non-slip insert. Constructed for internal or external applications, the hard-wearing grit tread will endure punishing use without reduced performance. The matting surface is designed to deal with the worst levels of dirt and grit while providing a safe surface to walk on.

BIRRUS DURAMAT APPLICATIONS

DURAGRIT is suitable for walkways and entranceways that are on an incline. It has been used successfully in retail and office entranceways where the safety of the workers and the public are paramount. DURAGRIT is such a robust and safe system that it is also used in more industrial settings to ensure worker safety in manufacturing facilities and other industrial environments.

BIRRUS DURAMAT SAFETY

While providing a valuable service in retaining dirt and moisture from passing traffic, DURAGRIT is above all a safety matting system. Slip tested to AS/NZS 4586:2013 standard, DURAGRIT provides sure footing to protect people where the danger of a fall is high – in wet, gritty conditions on an inclined surface. Where these factors combine, DURAGRIT is the only choice that provides the safety required in a durable matting system.

All Birrus Matting is proudly manufactured in Australia using high quality materials and modern manufacturing processes.



BIRRUS DURAGRIT SYSTEMS

BIRRUS DURAGRIT

DURAGRIT has a track-record in providing a safe walking surface even in wet conditions on an incline. The inlay is manufactured with a three stage process. Firstly, the Dura polyurethane/Nitrile surface is finished for adhesion. Then, abrasive grit particles are adhered to the top before it receives a final flexible resin coating which creates the specialised anti-slip surface.

DURAGRIT is available in both open and closed construction formats. The 10mm Open Slimline Construction option features an aluminium extrusion system with a perforated joining strip between the treads to allow for drainage. The Closed Construction option is available in both 10mm and 16mm configurations.

BIRRUS DURAGRIT TECHNICAL SPECIFICATION

CONSTRUCTION

- High quality aluminium construction
 - » 6000 series alloy for a high-quality and corrosion resistant finish
- Furrowed aluminium treads for a non-slip surface
- Polyurethane/Nitrile inserts with specialised grit finish for added grip
- Closed or open slimline construction options
 - » Closed construction available in 10mm and 16mm depth
 - » Open construction available in 10mm depth

DESIGN

- Optional 15 micron anodised coating available in Precious Gold, Antique Bronze, Midnight Black or Clear
- Matting length and width can be constructed to your specification

ACCREDITATION

- Australian made and Slip Tested to AS/NZS 4586:2013

BIRRUS DURAGRIT PROFILES



Closed Construction 10mm & 16mm



REQUEST A SAMPLE

To request a free sample of DURAGRIT for consideration on your next project, call 1300 369 858 or visit www.birrusmatting.com.au



BIRRUS DURAGRIT ANODISED COLOURS

Precious Gold

Antique Bronze

Midnight Black

ABOUT BIRRUS

For over 60 years, Birrus has been trusted by architects and builders in Australia for products that are both beautiful and durable. We have maintained our market leadership by moving with the times, using the latest materials and design innovations to remain your first choice for matting systems. All of our matting systems are manufactured in Australia using high-grade materials and are backed by a 10 year warranty. As a company, Birrus has also implemented a number of measures to minimise our carbon footprint, initiated recycling procedures and gained environmental accreditation.



ULTRAMAT Impressions Branded Systems

Greet your visitors personally at the door

You can extend branding to the entrance to your premises using a high-quality matting system featuring your logo or corporate message. ULTRAMAT Impressions has been designed for buildings where the corporate imagery is intrinsic to the visitor experience and needs to be included for subtle brand reinforcement.

ULTRAMAT IMPRESSIONS QUALITY

The ULTRAMAT name is recognised for design quality and durability. Each matting system is individually manufactured to your specification from the highest quality materials with optimised manufacturing processes. In most locations, our team of experienced fitters can install your matting system to ensure the highest-quality outcome for your project.

ULTRAMAT IMPRESSIONS PRODUCTION

By specifying a matting system that is Australian-made, you know you are selecting a product that supports and benefits from local expertise in design and manufacturing. ULTRAMAT Impressions loop-pile insert options are also Ecospecifier Global Green Tag Certified to support your environmental accreditation requirements.

ULTRAMAT IMPRESSIONS DESIGN

To ensure you can specify a colour design that will complement your interior palette, ULTRAMAT Impressions offers a full range of colour options. With 13 standard carpet insert colours and bespoke colour available by special order, we can match your design requirements.

For the aluminium matting frame and treads, we also offer a range of clear or tinted anodised coatings to enhance durability and offer a different visual option. A Midnight Black coating can be applied to give a difference appearance to the matting system.

All Birrus Matting is proudly manufactured in Australia using high quality materials and modern manufacturing processes.



BIRRUS ULTRAMAT IMPRESSIONS SYSTEMS

BIRRUS ULTRAMAT IMPRESSIONS

Building on the reputation of our flagship ULTRAMAT product, ULTRAMAT Impressions offers an innovative system that helps clients support their branding. It is ideal for applications including high-end retail, hospitality, corporate and luxury residential buildings.

The customisable branding strip has black print on brushed metal or silver print on black background options. This delivers sharp and legible imagery and text for optimal presentation of logos and messaging. The new 75mm extrusion design both adds to the system's visual appeal and increases its slip-resistance rating.

This matting system gives your clients a new option to benefit from a matting system that gives a high-quality look in a durable product. It also does this while supporting their physical, on-location marketing efforts.

BIRRUS ULTRAMAT IMPRESSIONS TECHNICAL SPECIFICATION

CONSTRUCTION

- High quality aluminium construction
 - » 6000 series alloy for a high-quality and corrosion resistant finish
- Furrowed aluminium treads for a non-slip surface
- 10m Closed Construction

DESIGN

- Optional 15 micron anodised coating available in Midnight Black or Clear
- A range of 13 standard carpet colour options with other colours available by special order
- Carpet ranges include premium loop and cut pile options
- Matting length and width can be constructed to your specification

ACCREDITATION

- Our Cut Pile and Loop Pile options are both slip tested and fire tested to Australian Standards
- Loop Pile options are Ecospecifier Global Green Tag Certified to GreenRate Level C

CUT PILE CARPET INSERT SPECIFICATIONS

Technical Specification

- Construction: Cut Pile
- Yarn: Yarn dyed nylon
- Yarn Weight: 1000 g/m²
- Machine Gauge: 1/10th Gauge
- Total Thickness: 9.0mm
- Backing Structure: Reinforced PVC backing

Performance Specification

- Commercial Rating: Extra heavy duty
- Anti-static: <1000v
- Fire Testing Certification: available on request
- Slip Testing Certification: available on request

REQUEST A SAMPLE

To request a free sample for consideration on your next project, call 1300 369 858

LOOP PILE CARPET INSERT SPECIFICATIONS

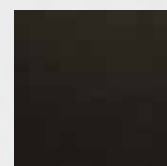
Technical Specification

- Yarn: Type 6 Nylon
- Pile Weight: 814 g/m²
- Colour System: 100% Solution dyed nylon
- Machine Gauge: 1/12th Gauge
- Pile Height: 4.0mm (+/- 0.5mm)
- Total Thickness: 7.5mm (+/- 0.5mm)
- Backing Structure: GlasBac[®], GlasBac[®]RE

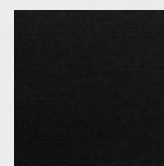
Performance Specification

- Area of Use: Commercial extra heavy duty
- Dimensional Stability: Less than 0.2% variation
- Anti-static: AATCC134 < 3000 Volts
- Fire Testing Certification: available on request
- Slip Testing Certification: available on request
- Less Waste: Modular carpet creates about 85% less installation waste than broadloom.

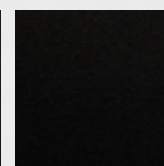
LOOP PILE CARPET INSERT STANDARD COLOURS



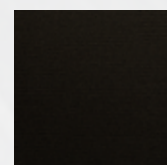
ASPHALT



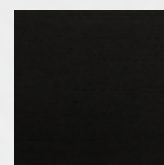
CHARCOAL



COAL



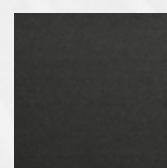
DUSK



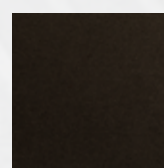
GRAPHITE



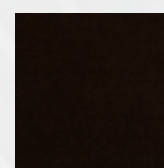
CUT PILE CARPET INSERT STANDARD COLOURS



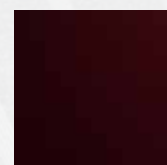
ASH



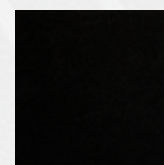
BROWNSTONE



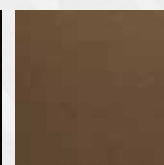
CHOCOLATE



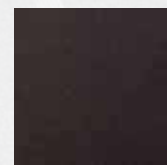
CLARET



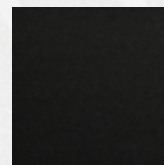
JET BLACK



LATTE



MUSHROOM



SLATE

ANODISED COATING COLOUR



Midnight Black

ABOUT BIRRUS

For over 70 years, Birrus has been trusted by architects and builders in Australia for products that are both beautiful and durable. We have maintained our market leadership by moving with the times, using the latest materials and design innovations to remain your first choice for matting systems. As a company, Birrus has also implemented a number of measures to minimise our carbon footprint, initiated recycling procedures and gained environmental accreditation.



COCAMAT

Effective Indoor Protection

Protect internal floor surfaces from grit and moisture

Shoes can carry dirt and grit deep within the grooves of the sole. If your matting system doesn't effectively remove this, then it's only doing half the job. Birrus COCAMAT features a stepped profile which gets into those grooves to remove dirt and moisture to protect your internal flooring from avoidable scratching and wear.

BIRRUS COCAMAT DESIGN

Designed exclusively for indoor use, COCAMAT uses the same aluminium extrusion as our other mats but with a coir insert which is available in both the honey brown colour and dyed black. In addition to the standard aluminium finish, anodised options are available in Clear, Precious Gold, Antique Bronze or Midnight Black to compliment your entranceway colour scheme.

BIRRUS COCAMAT VERSATILITY

As well as the colour options available for COCAMAT, Birrus can individually tailor your matting system to the specific width and length required for your entranceway. This allows you to have a matting system that is both effective in the area that it covers, and an appropriate shape for your overall entranceway design.

BIRRUS COCAMAT EFFECTIVENESS

COCAMAT's "stepped profile" sits 10mm above the aluminium treads. This effectively acts like an upside-down broom to penetrate the grooves on the soles shoes to effectively remove dirt, grit and moisture. This efficient system traps substances that would otherwise be trodden throughout the building adding to scratching and wear on floor surfaces over time. Water is absorbed by the Coir to trap it in the matting system until it can dry out naturally.

All Birrus Matting is proudly manufactured in Australia using high quality materials and modern manufacturing processes.



BIRRUS COCAMAT SYSTEMS

BIRRUS COCAMAT

Birrus COCAMAT is manufactured in Australia from natural coir matting sourced from our supplier in Sri Lanka, who has over 130 years of experience in the fibre industry. The coir fibre is moulded with a high quality PVC backing which controls shedding and stops the mat moving. Coir is an eco-friendly and sustainable matting material ideal for business and residential environments. Coir production is also a vital industry for the small towns and villages that are involved in the growing, harvesting and processing of the coconuts and the processing of the coir fibre.

Coir is both durable and easy to clean. It has an excellent brushing action and helps fast moisture evaporation.

BIRRUS COCAMAT TECHNICAL SPECIFICATION

CONSTRUCTION

- High quality aluminium construction
 - » 6000 series alloy for a high-quality and corrosion resistant finish
- Furrowed aluminium treads for a non-slip surface
- PVC-backed coir fibre inserts
- Closed construction available in 10mm and 16mm depth

DESIGN

- Coir available in the honey brown colour or black
- Optional 15 micron anodised coating available in Precious Gold, Antique Bronze, Midnight Black or Clear
- Stepped profile requires a minimum 10mm clearance if a door is to pass over the mat
- Matting length and width can be constructed to your specification

ACCREDITATION

- Australian made
- Slip tested to AS/NZS 4586:2013 Accreditation

BIRRUS COCOMAT PROFILES



Closed Construction 10mm & 16mm



REQUEST A SAMPLE

To request a free sample of COCAMAT for consideration on your next project, call 1300 369 858 or visit www.birrusmatting.com.au



ABOUT BIRRUS

For over 60 years, Birrus has been trusted by architects and builders in Australia for products that are both beautiful and durable. We have maintained our market leadership by moving with the times, using the latest materials and design innovations to remain your first choice for matting systems. All of our matting systems are manufactured in Australia using high-grade materials and are backed by a 10 year warranty. As a company, Birrus has also implemented a number of measures to minimise our carbon footprint, initiated recycling procedures and gained environmental accreditation.